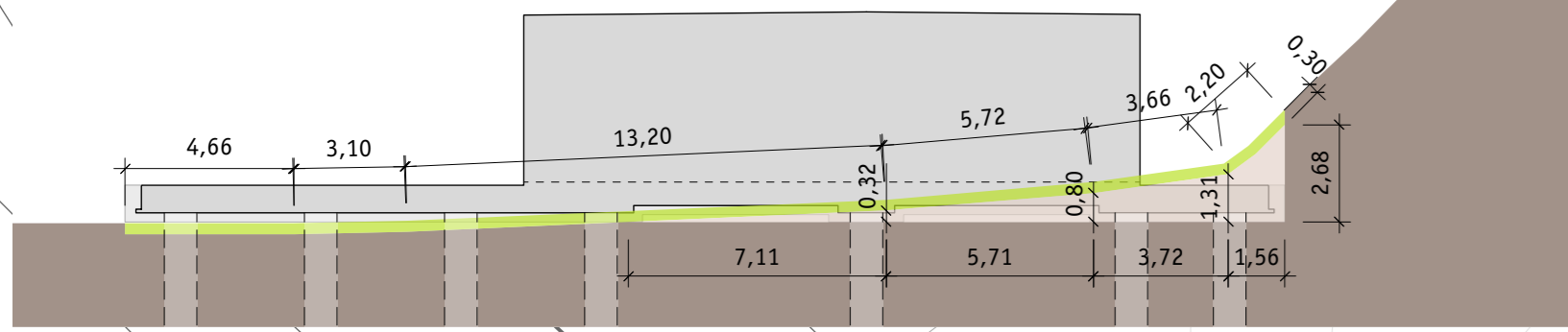
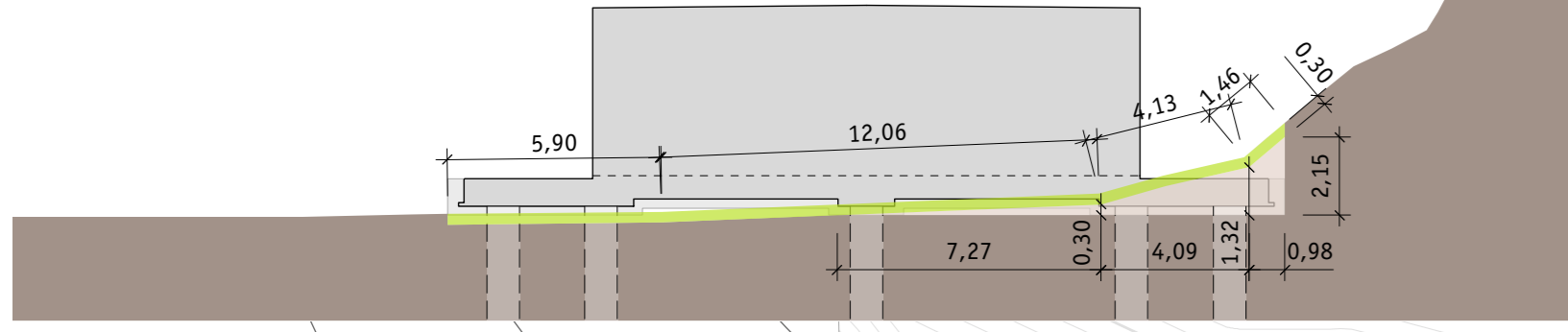


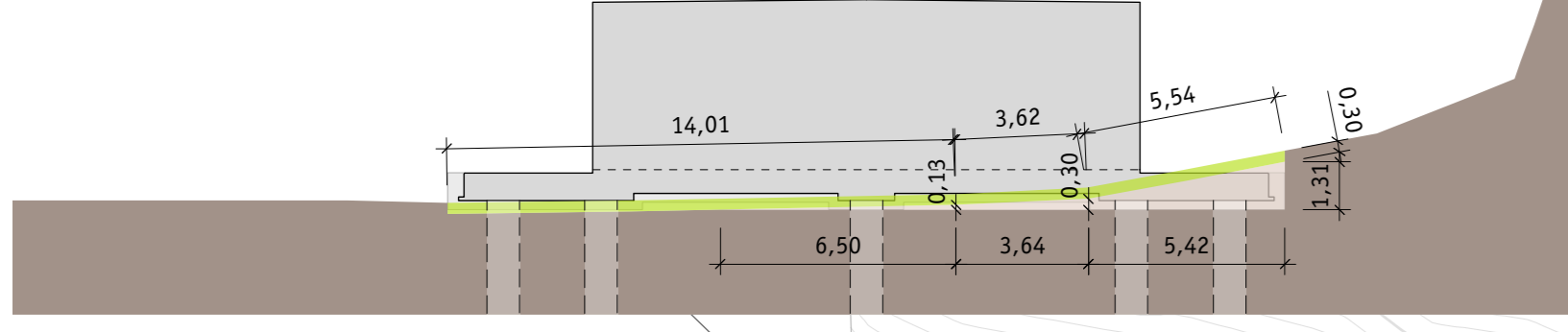
SCHNITT 1 SEZIONE 1



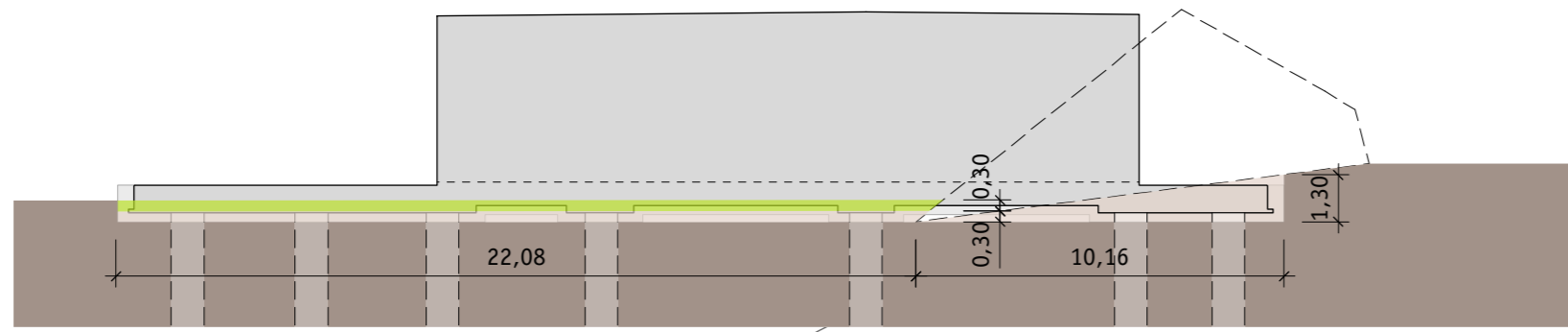
SCHNITT 2 (A-A) SEZIONE 2 (A-A)



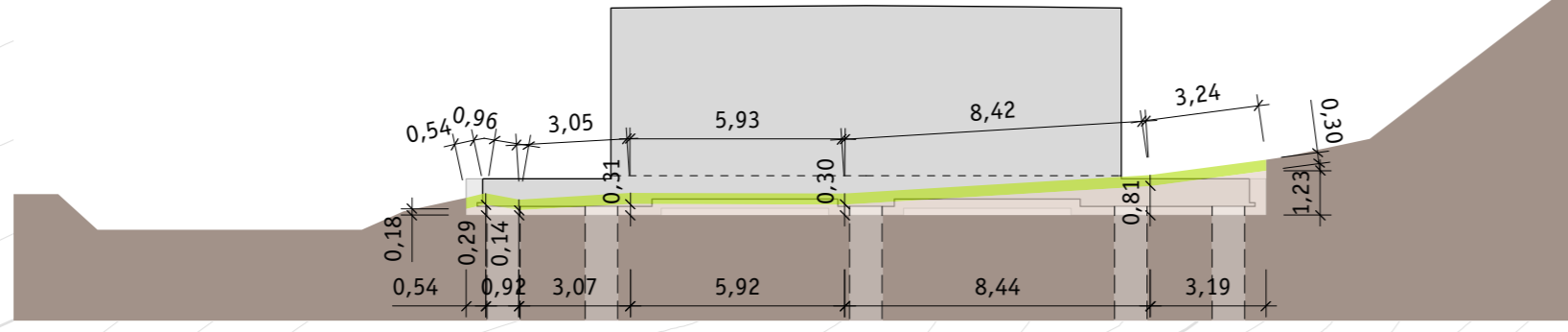
SCHNITT 3 SEZIONE 3



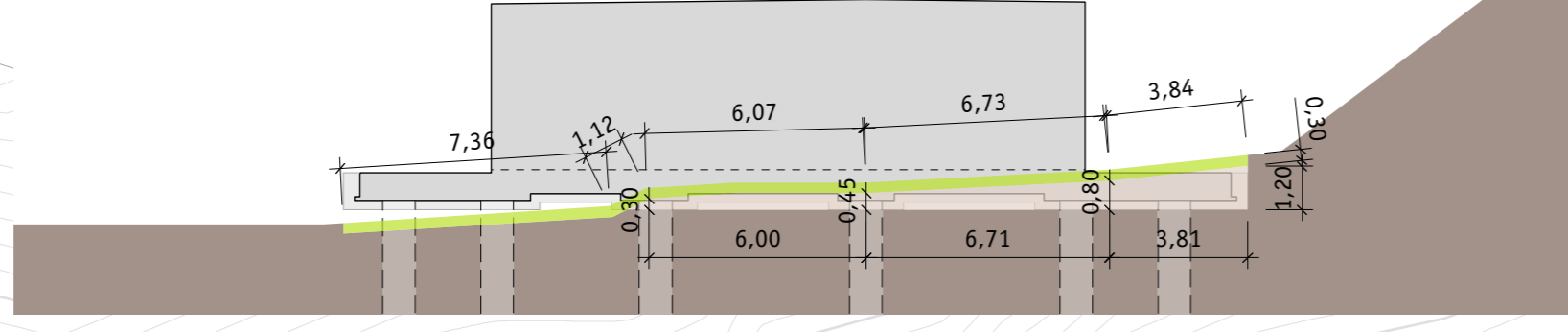
SCHNITT 4 (B-B) SEZIONE 4 (B-B)



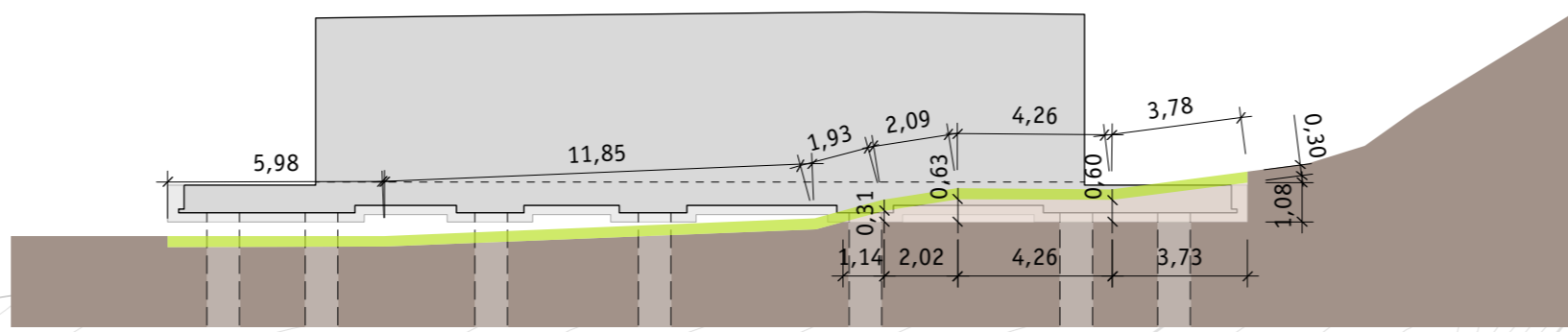
SCHNITT 5 SEZIONE 5



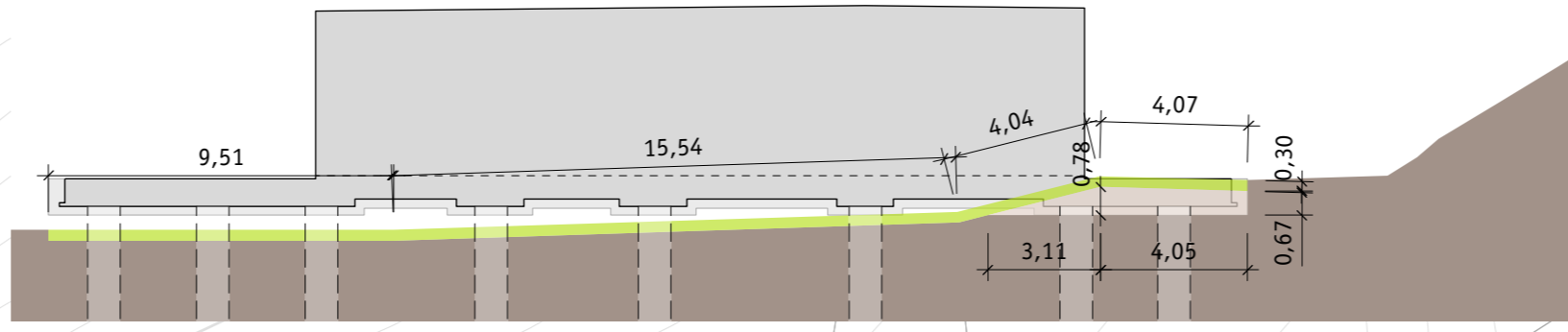
SCHNITT 6 (C-C) SEZIONE 6 (C-C)



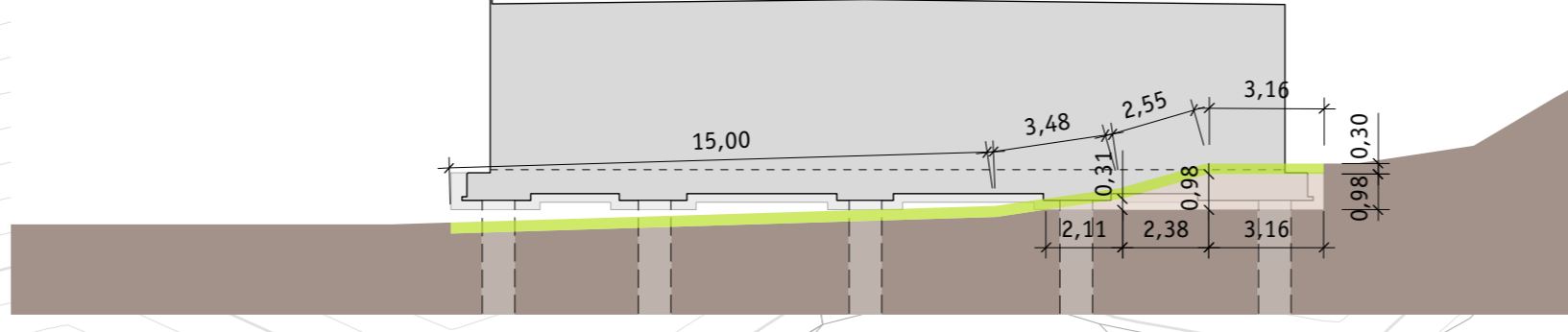
SCHNITT 7 SEZIONE 7



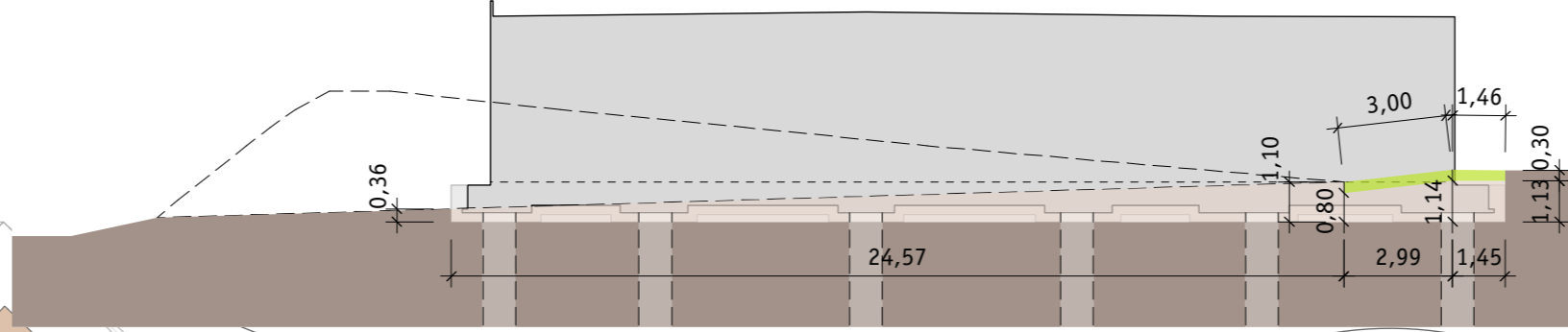
SCHNITT 8 SEZIONE 8



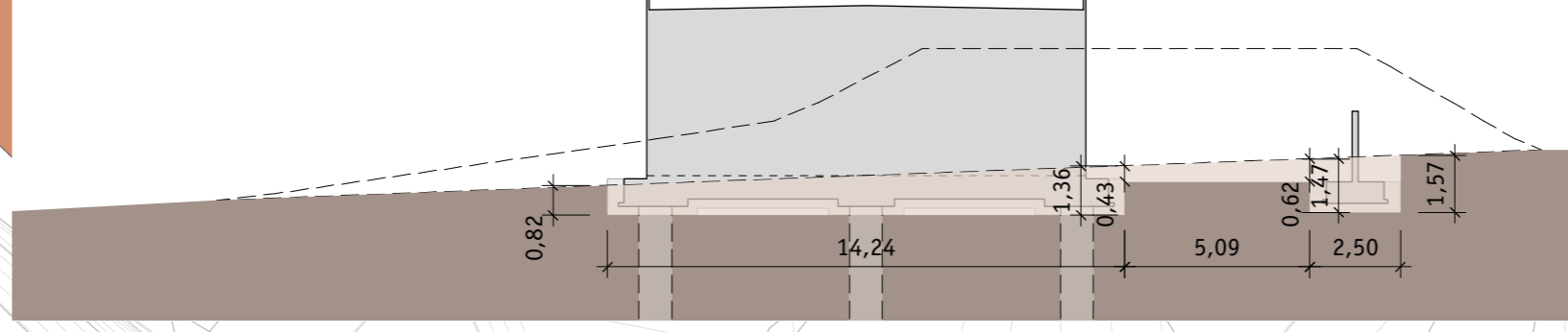
SCHNITT 9 (D-D) SEZIONE 9 (D-D)



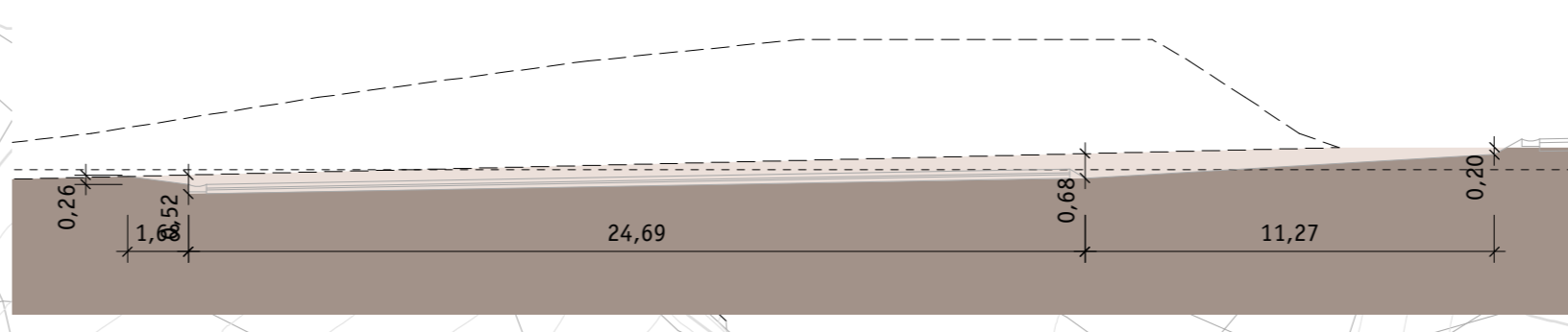
SCHNITT 10 SEZIONE 10



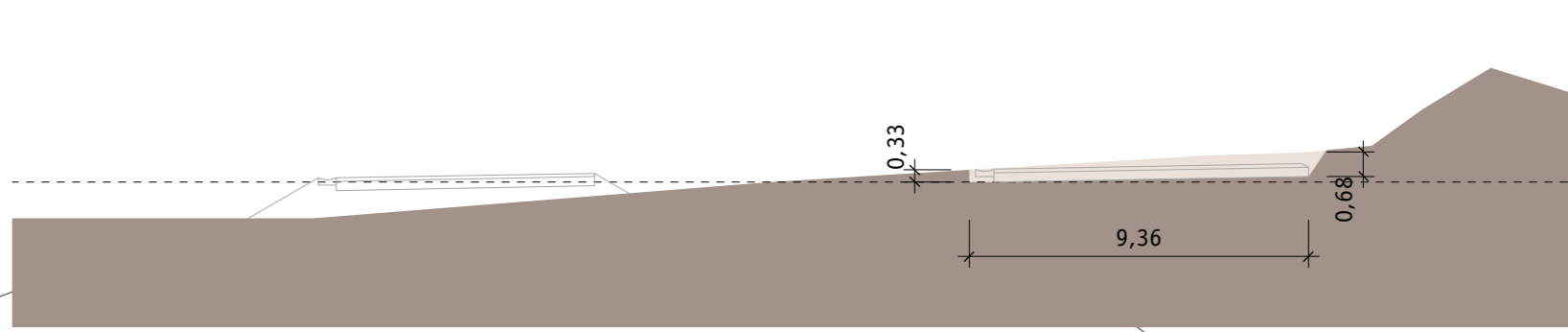
SCHNITT 11 SEZIONE 11



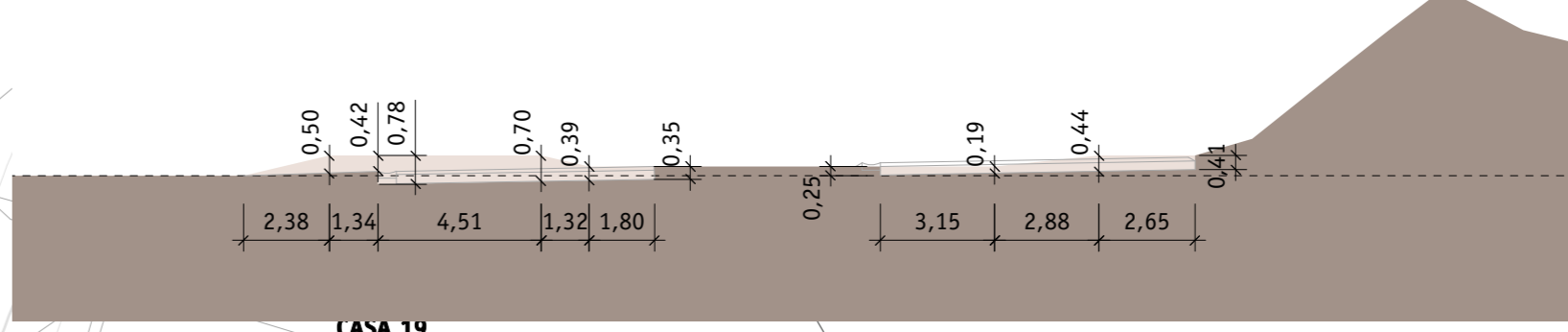
SCHNITT 12 (F-F) SEZIONE 12 (F-F)



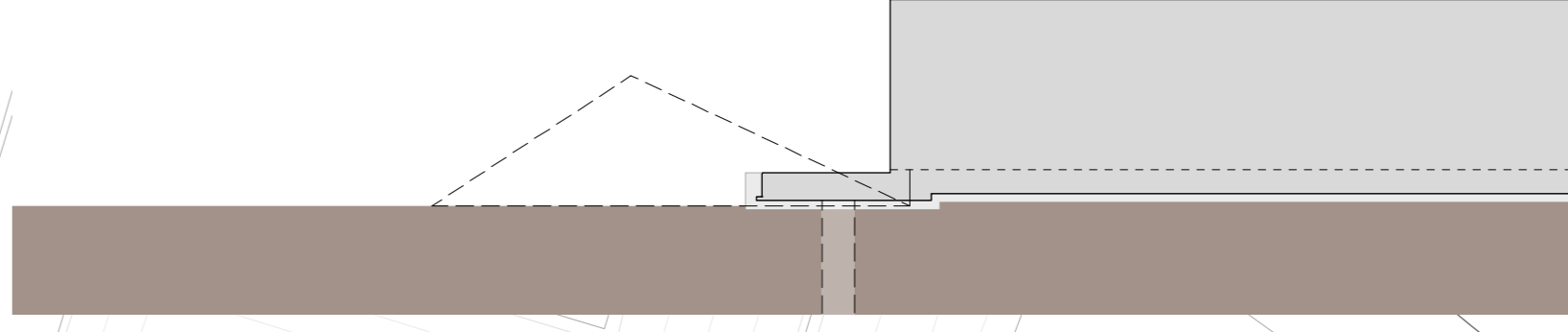
SCHNITT 13 SEZIONE 13



SCHNITT 14 (G-G) SEZIONE 14 (G-G)



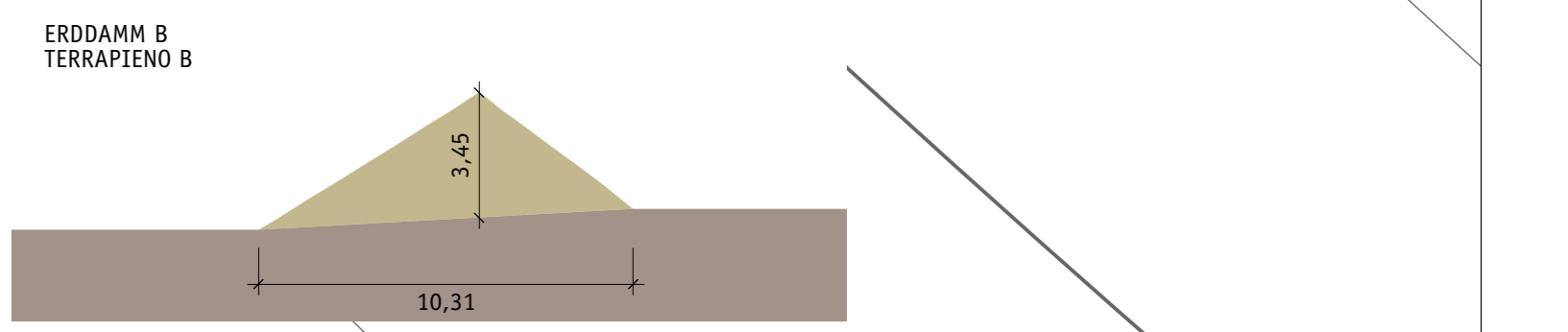
SCHNITT 15 SEZIONE 15



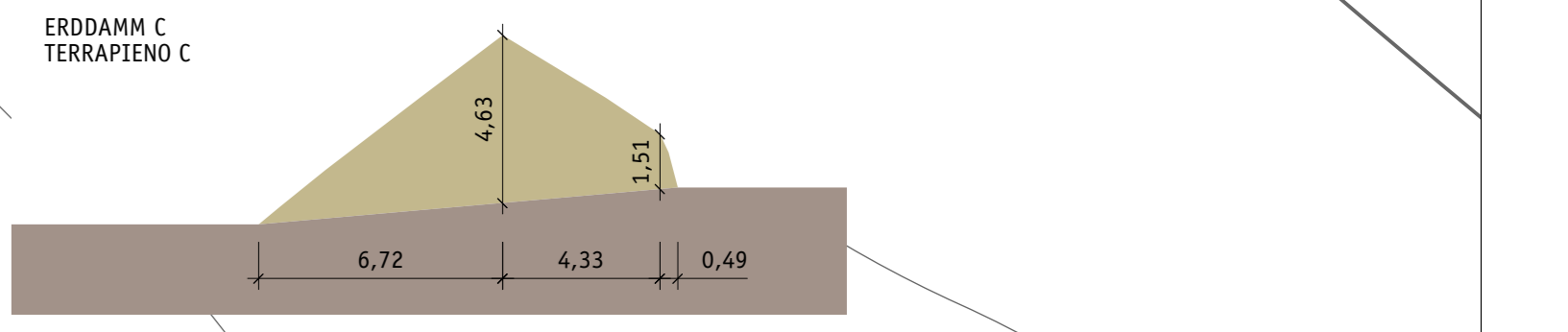
SCHNITT 20 SEZIONE 20



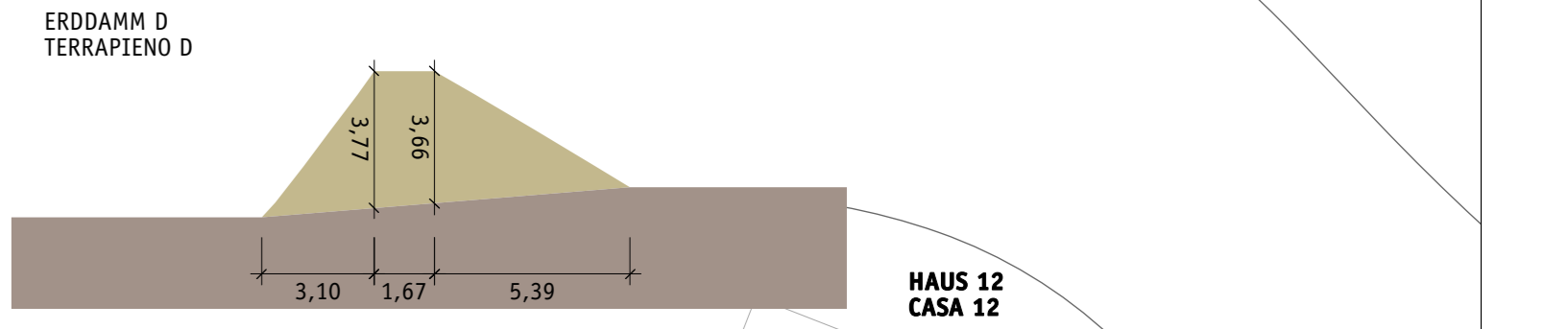
SCHNITT 21 SEZIONE 21



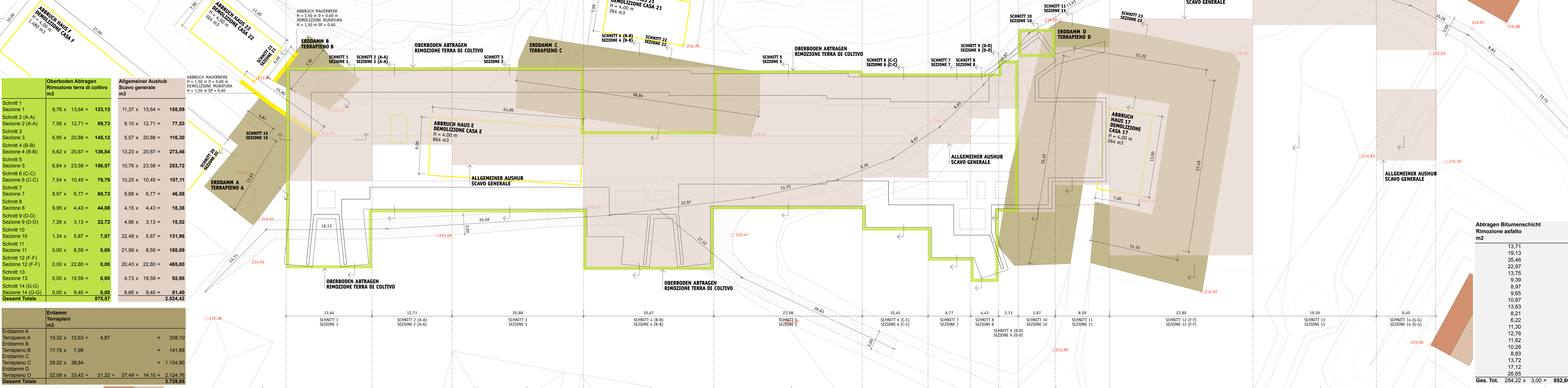
SCHNITT 22 SEZIONE 22



SCHNITT 23 SEZIONE 23



OBERBODEN ABTRAGEN - RIMOZIONE TERRA DI COLTIVO



Oberboden Abtragen Rimozione terra di coltivo m3	Allgemeiner Aushub Scavo generale m3	Abbruch Mauerwerk H = 1,50 m D = 0,60 m DEMOLIZIONE MURATURA H = 1,50 m SP = 0,60
Schnitt 1	11,37 x 13,64 = 155,09	
Schnitt 2 (A-A)	6,10 x 12,71 = 77,53	
Schnitt 3	5,57 x 20,88 = 116,30	
Schnitt 4 (B-B)	13,23 x 20,67 = 273,46	
Schnitt 5	10,76 x 23,58 = 253,72	
Schnitt 6 (C-C)	10,25 x 10,45 = 107,11	
Schnitt 7	6,88 x 6,77 = 46,58	
Schnitt 8	4,15 x 4,43 = 18,38	
Schnitt 9 (D-D)	4,96 x 3,13 = 15,52	
Schnitt 10	22,48 x 5,87 = 131,96	
Schnitt 11	21,99 x 8,59 = 188,89	
Schnitt 12 (F-F)	20,43 x 22,80 = 465,80	
Schnitt 13	4,73 x 19,59 = 92,66	
Schnitt 14 (G-G)	8,66 x 9,40 = 81,40	
Schnitt 15		
Gesamt Totale	875,57	2.024,42

Erddamm Terrapieni m3		
Erddamm A	19,32 x 12,63 + 4,87	= 338,10
Erddamm B	17,78 x 7,98	= 141,88
Erddamm C	29,22 x 38,84	= 1.134,90
Erddamm D	22,08 x 33,42 + 21,22 + 27,49 + 14,10	= 2.124,76
Gesamt Totale		3.739,65

Abtragen Bitumenschicht Rimozione asfalto m2	
	13,71
	19,13
	35,46
	22,97
	9,39
	8,97
	9,65
	10,87
	13,63
	8,21
	6,22
	11,30
	12,76
	11,62
	10,26
	8,83
	17,12
	26,65
Ges. Tot.	284,22 x 3,00 = 852,66

Autonome Provinz Bozen
Assessorat für Bauen
Abt. 11 - Hochbau und technischer Dienst

Provincia Autonoma di Bolzano
Assessorato ai lavori pubblici
Rep. 11 - Edilizia e servizio tecnico

Provincia Autonoma di Bolzano
Assessorato per l'edilizia pubblica
Rep. 11 - Franchisé e servizi tecnici

Projekt
Kodex: 22.01.999.003.17.0

Progetto
Codice: 22.01.999.003.17.0

ERRICHTUNG EINES SCHIEBETANDES IN DER "TETTONI" KASERNE IN KALTERN

REALIZZAZIONE DI UN POLIGONO DI TIRO PRESSO LA CASERMA "TETTONI" DI CALDARO

AUSFÜHRUNGSPROJEKT

PROGETTO ESECUTIVO

Planinhalt | Contenuto

AUSHUB SCAVI

1:200

Plan Nr. | Tavola n.
A3b

Der Direktor des Amtes 11.2
il Direttore dell'Ufficio 11.2

Arch. Maria Albertoni

Verfasst
Elaborato

Datum
Data

19.07.2013

Änderung
Modifica

11.03.2015

Bauherrn | Committenti

Autonome Provinz Bozen
Provincia Autonoma di Bolzano
Abt. 11 - Hochbau und technischer Dienst
Rep. 11 - Edilizia e servizio tecnico
39100 BOLZANO | BOLZANO
Silvius Magagnoli Platz 10 Piazza Silvius Magagnoli
tel. 0471/42500-31 fax 0471/912200

Dr. Arch. Andrea Sega

Ministero della Difesa
Direzione generale dei lavori e del Demanio
4. Reparto Progetti
11. Divisione

Genehmigungen | Approvazioni

Planer | Progettisti

Dr. Arch. Carlo Azzolini
Via Leonardo da Vinci Strada n. 13
39100 Bolzano Bozen
tel. 0471/120072
e-mail: carlo@azzolini-kompascher.it

Ampl. 11.2 - Hochbau Vmt. U4.2, Silvius Magagnoli Platz 10, 39100 Bolzano | Uff. 11.2 - Edilizia ovmt. Pst. 3, Piazza Silvius Magagnoli 10, 39100 Bolzano
tel. 0471/42500 - fax 0471/412209 | e-mail: hochbau.vmt@provinz.bz.it / edilizia.ovmt@provincia.bz.it