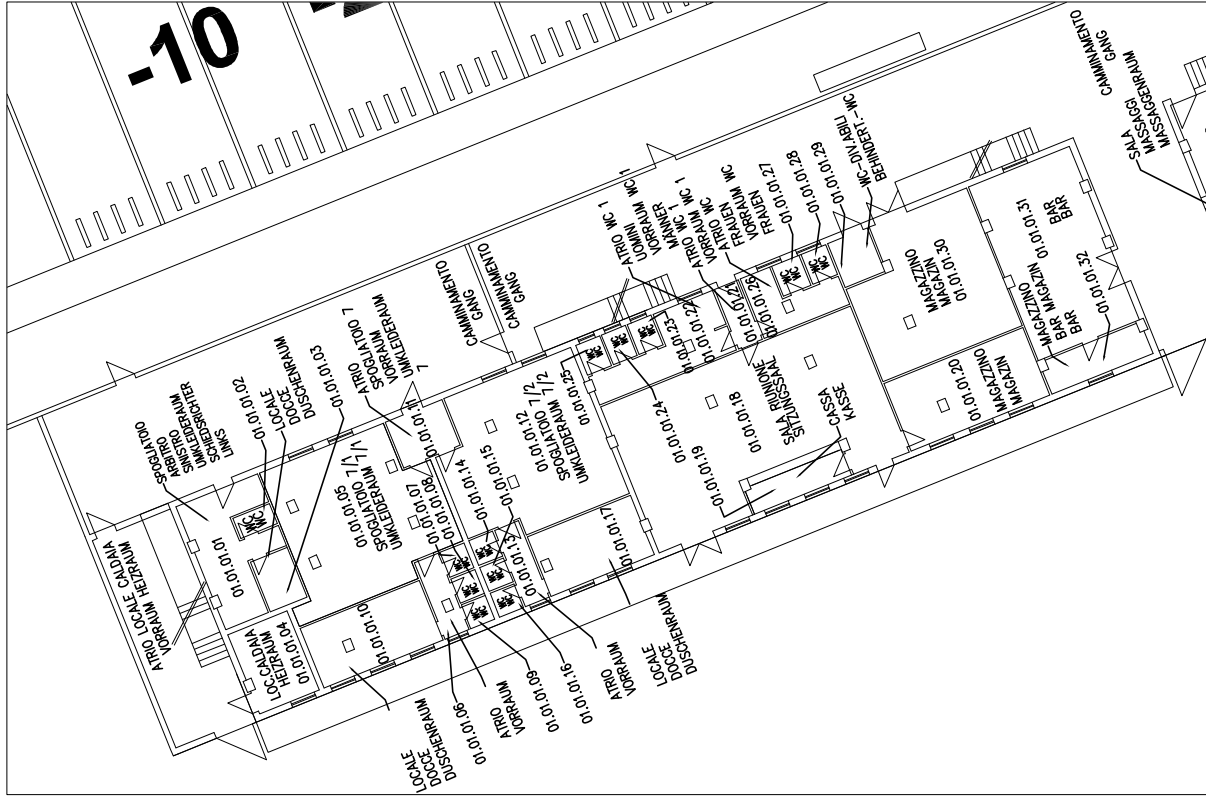
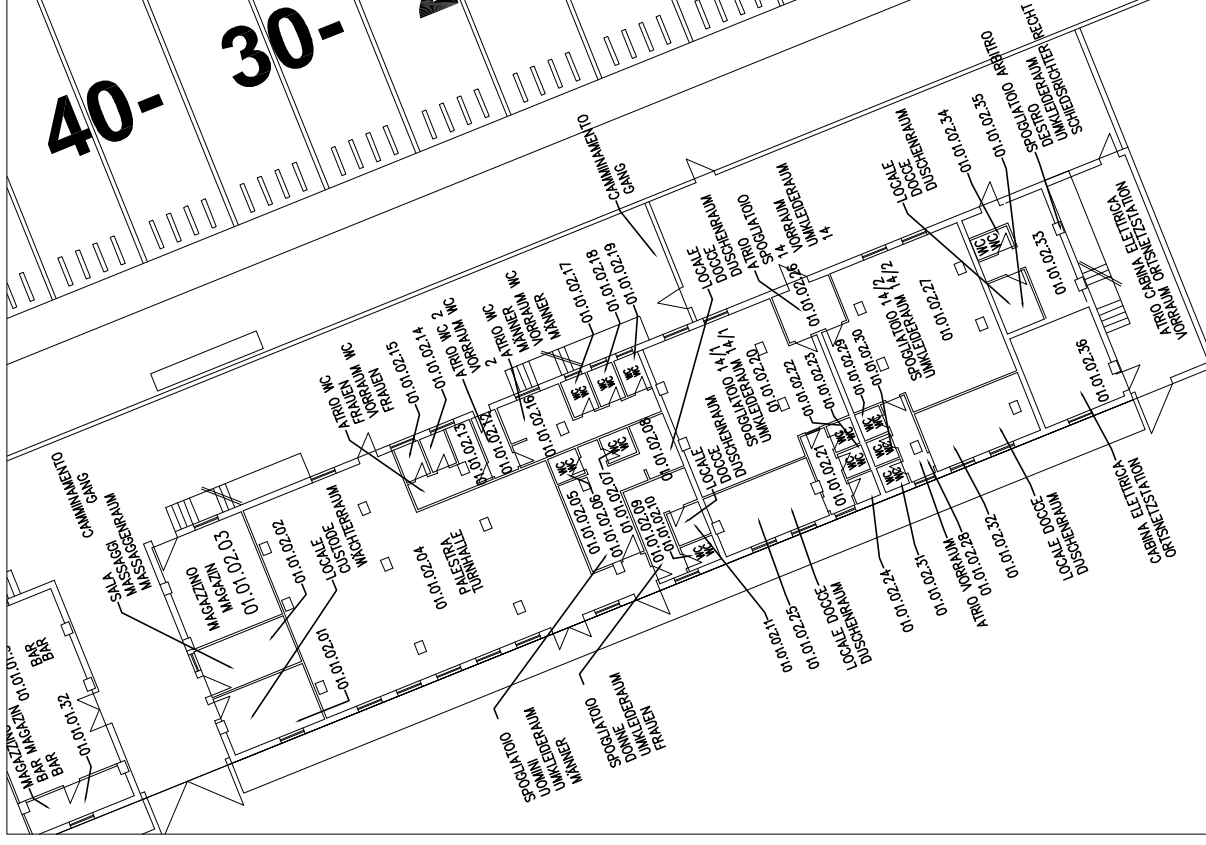


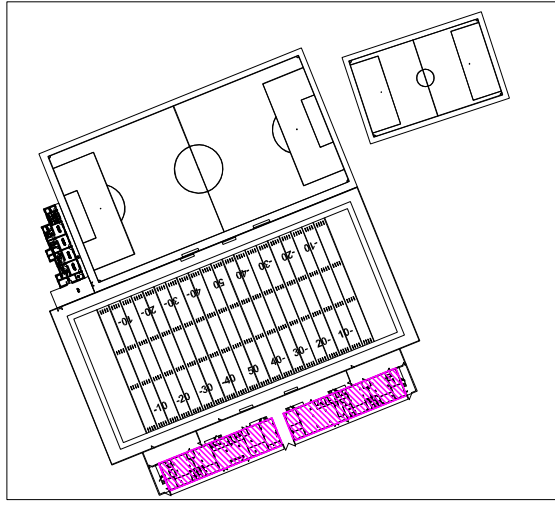
EDIFICIO SINISTRO LINKES GEBÄUDE (1:250)



EDIFICIO DESTRO RECHTES GEBÄUDE (1:250)



PIANTA CHIAVE - HAUPTLAGEPLAN (1:2000)



PROGETTISTA:

TIMBRICO:

COMMITTENTE:  
Comune di Bolzano  
Gemeinde Bozen  
Vicolo Gumer Gasse 7  
39100 Bolzano - Bozen (BZ)

DATA:  
27/01/2014

NUMERAZIONE LOCALI  
LOKALNUMMIERUNG